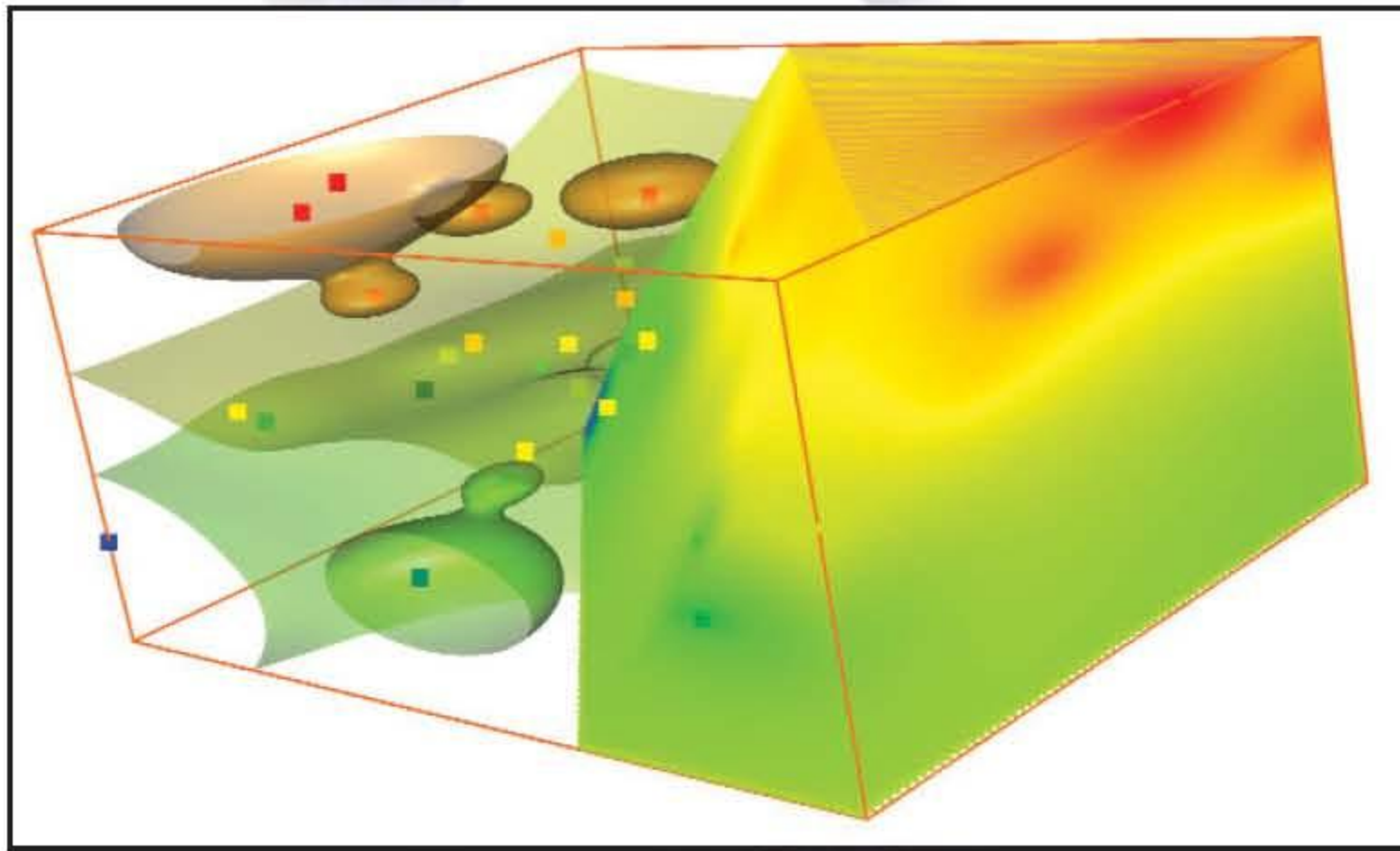
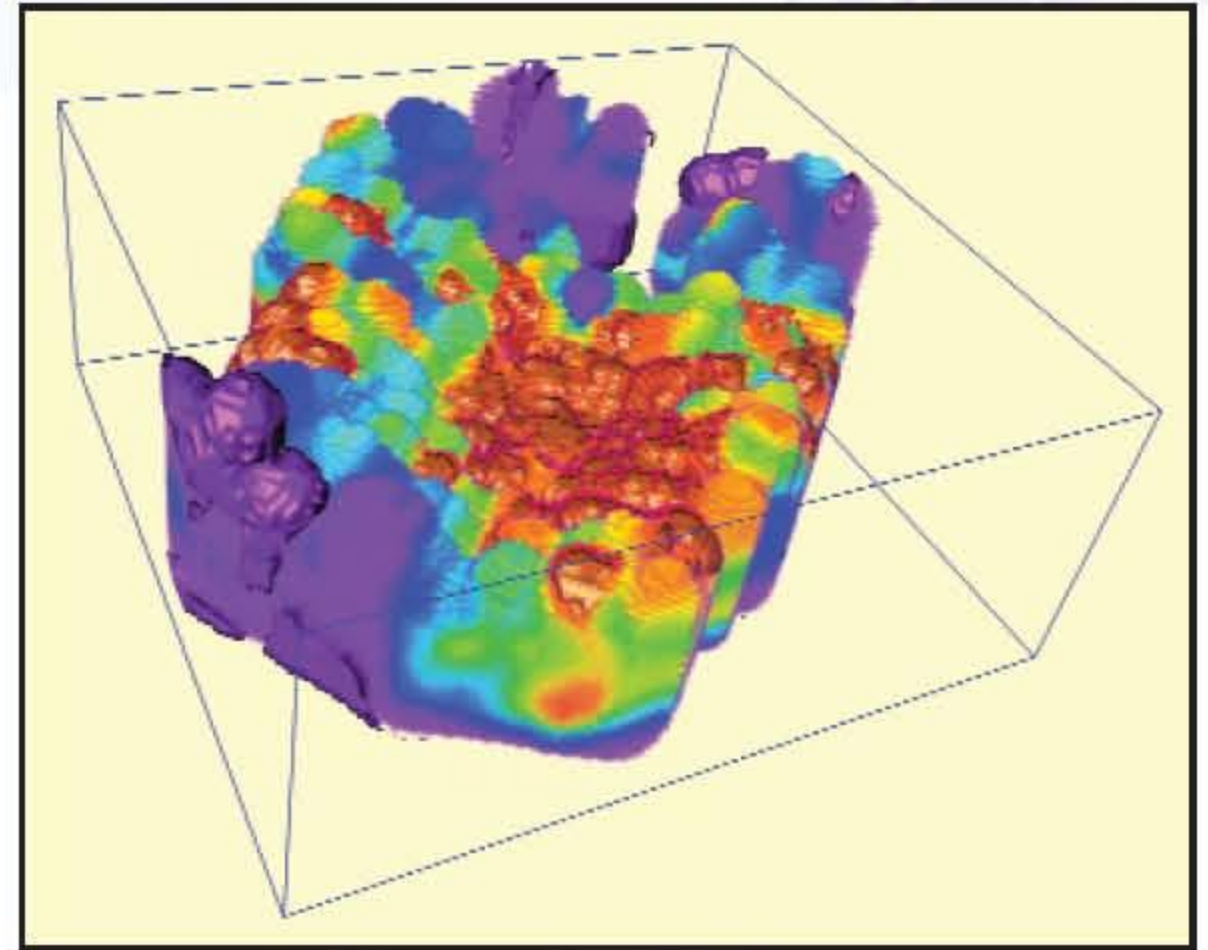


# The *NEW* Way to Visualize 3D Data!

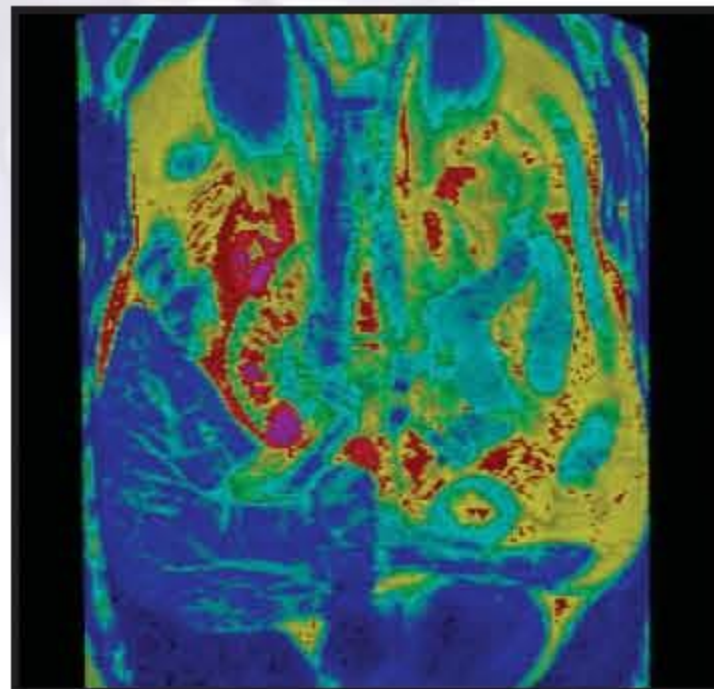
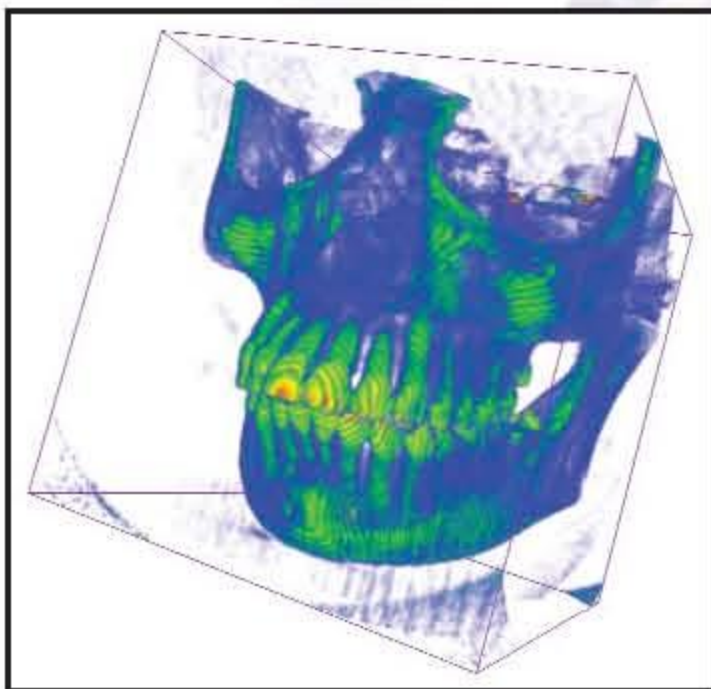
## *Powerful Key Features...*



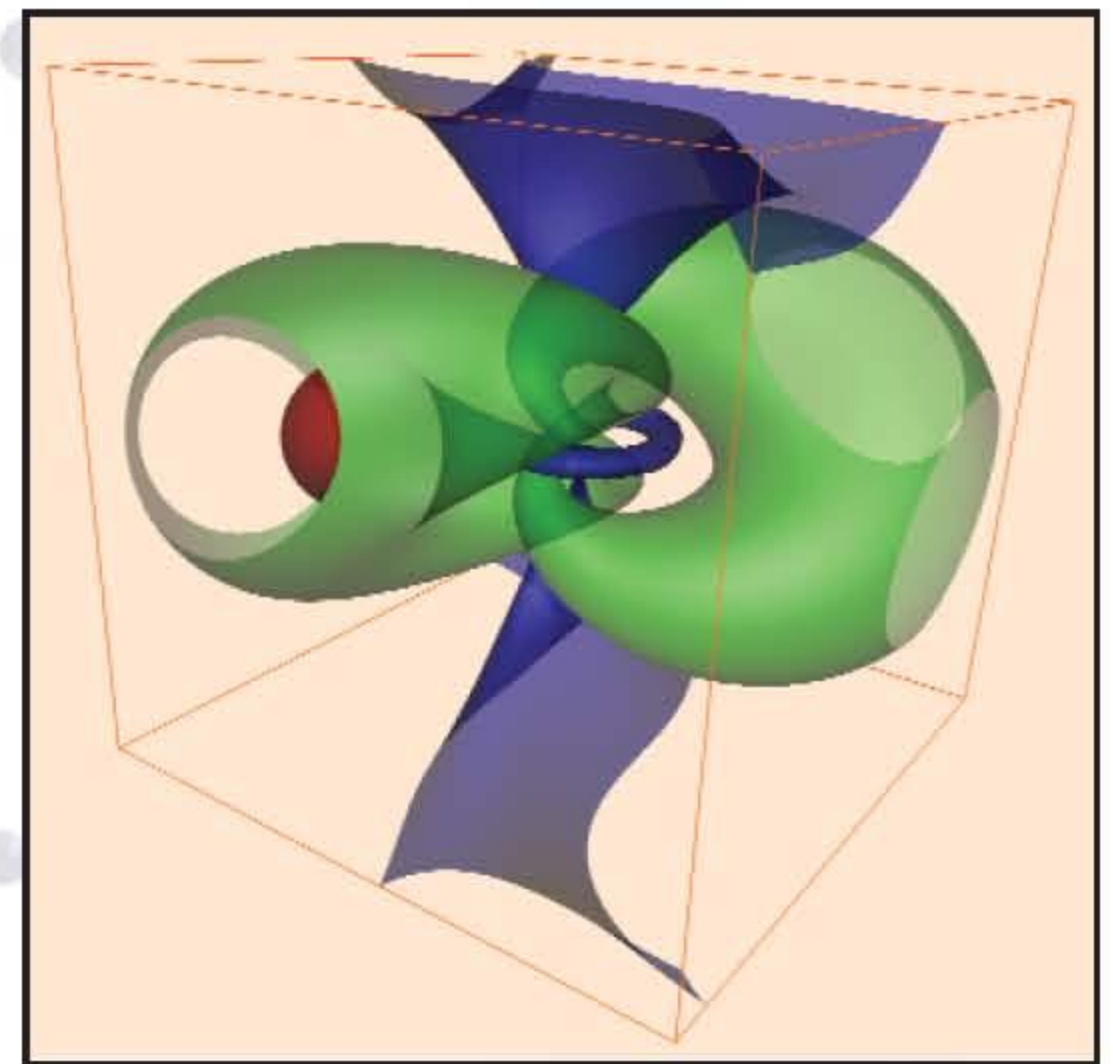
*Slice your view to reveal the inner workings of your model. Differentiate surfaces by different colors.*



*Illustrate your data in colorful rendered block diagrams, as shown with this display of magnitude readings from a conductivity survey.*



*Display medical data from CT, MRI, and ultrasound scans. MRI and CT scans of the skull, abdomen, and foot can be shown in color or grayscale rendering.*

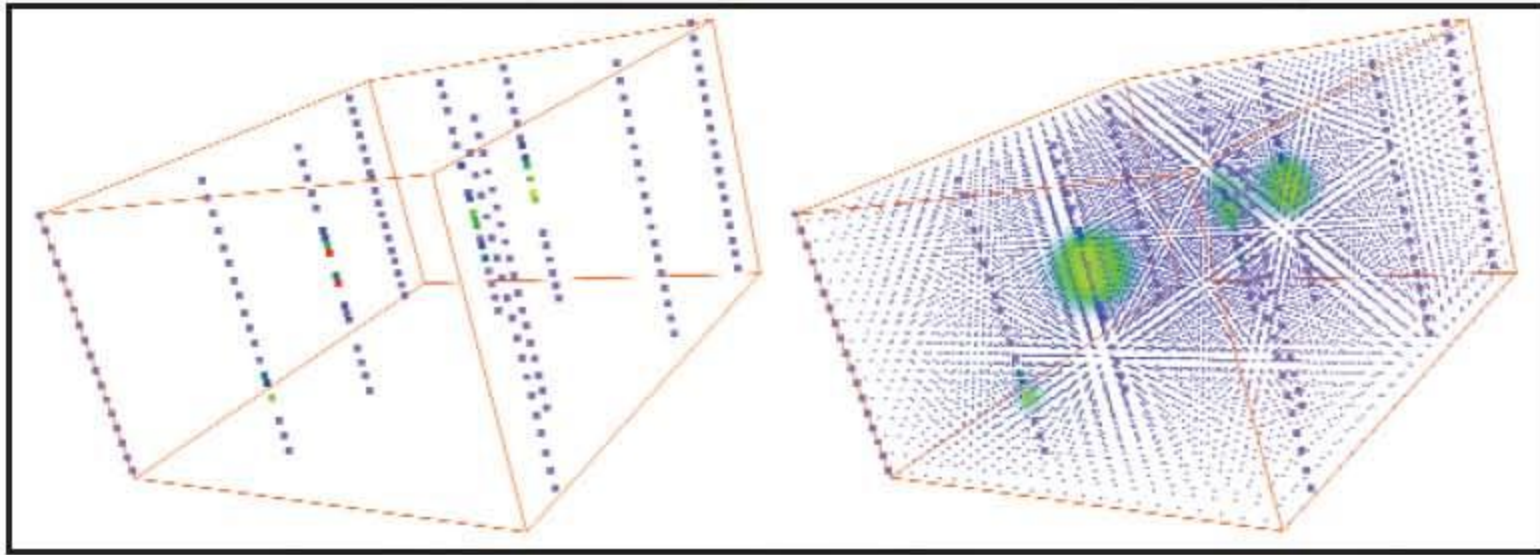


*Combine surfaces with different colors for different surface values to create a brilliant, clear, and concise display.*

# VOXLER<sup>®</sup>

by Golden Software, Inc.

# Solutions in 3D Data Visualization and Rendering!



Extrapolate calculated values from scattered data points (left) to create a 3D grid (right).

**Vox-ler**® (voks'-ler) n. - A revolutionary new software program from Golden Software for the visualization of three-dimensional data. From the term **voxel**, a volumetric element.

*"I'm enthusiastic about Voxler! Nice layout, fast running"*

Dr. Niels Hartog  
Research Fellow, University of Waterloo

## Defining the best, easiest, and fastest way to visualize your 3D data!

Explore the world of three-dimensional visualization! **Voxler** takes your raw, complex data and models it in a rich, interactive, visual environment. With an intuitive easy-to-use user interface, you will quickly visualize, evaluate, investigate, and examine your data.

**Voxler** has been developed by the industry's best programmers, document writers, and technicians, producing a warranted bug free, speedy, dynamic, powerful 3D visualization tool. **Voxler** is designed for the Windows platform only, avoiding the inherent slowness and complications of multiple platforms.

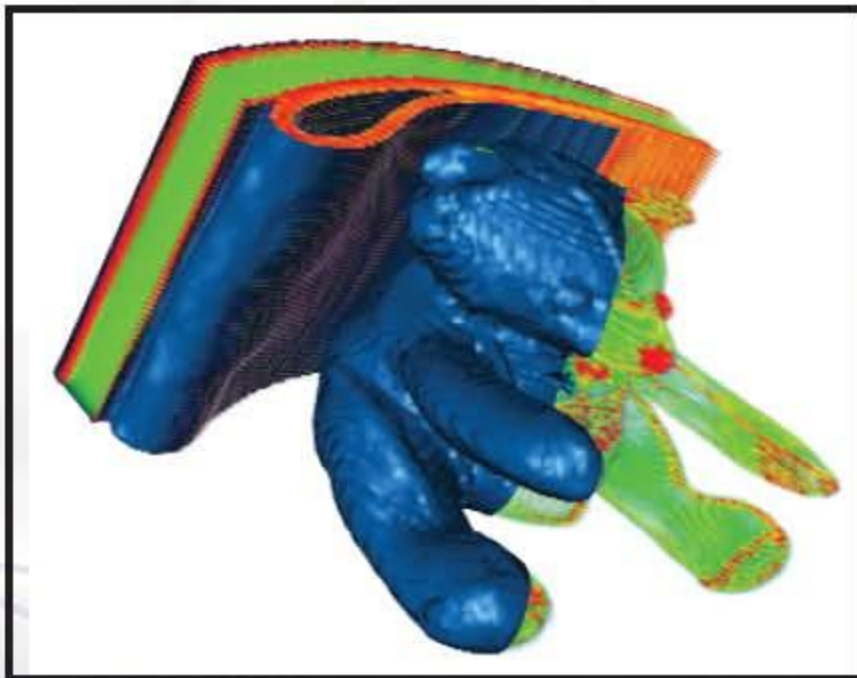
**Take advantage of Voxler's power!** Display your data in an unprecedented variety of 3D images, including volume rendering, isosurfaces, contours, three dimensional slices, orthographic and oblique images, scatter plots, stream lines, and vector plots. Importing your data into **Voxler** is no problem. **Voxler's** powerful data loader will speedily read your data and allow you to easily filter out anomalies or areas you want to eliminate. Interactively manipulate your data while simultaneously viewing the results.

You have complete control of the primary and intermediate calculations on your data set, producing the most accurate image possible. **Voxler's** gridding is based on Golden Software's renowned advanced gridding algorithms and techniques.

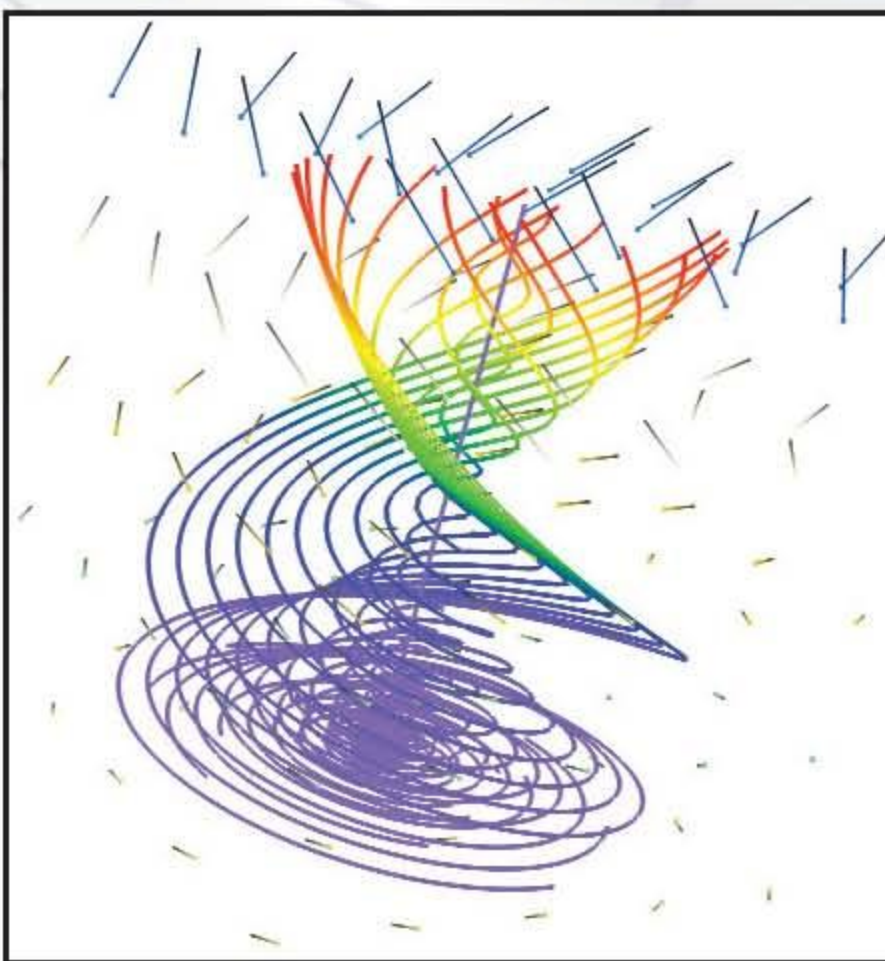
**Voxler's** equation analyzer is unparalleled in functionality and superior features. All of **Voxler's** user-friendly tools are available whether visualizing an equation or random data.

**Data analysis can be hard, but with Voxler it's easy!** Complex data sets are easy to understand and interpret when you display them in **Voxler**. Effortlessly rearrange your image's components. Rotate, slice, and dissect your data's image in real-time by simply dragging your mouse. **Voxler's** intuitive, powerful Windows interface hastens your start-up, leaving you plenty of time for visualizing your data. **Voxler** will help you increase your understanding of complex data sets allowing simplified decision making. **Voxler** has been designed to handle your largest data sets.

**Intuitive, interactive, and informative interpretation!** See the relationships buried deep within your data, unhindered by irrelevant points. Intelligent default settings bring the objective into view in a flash. Easily control the transparency of the entire plot or portions of it, based on the magnitude of the data. Personalize **Voxler** with a multitude of settings for repetitively, clearly, and concisely illustrating your data. **Voxler** provides easy access and recall to the most frequently used features and settings.



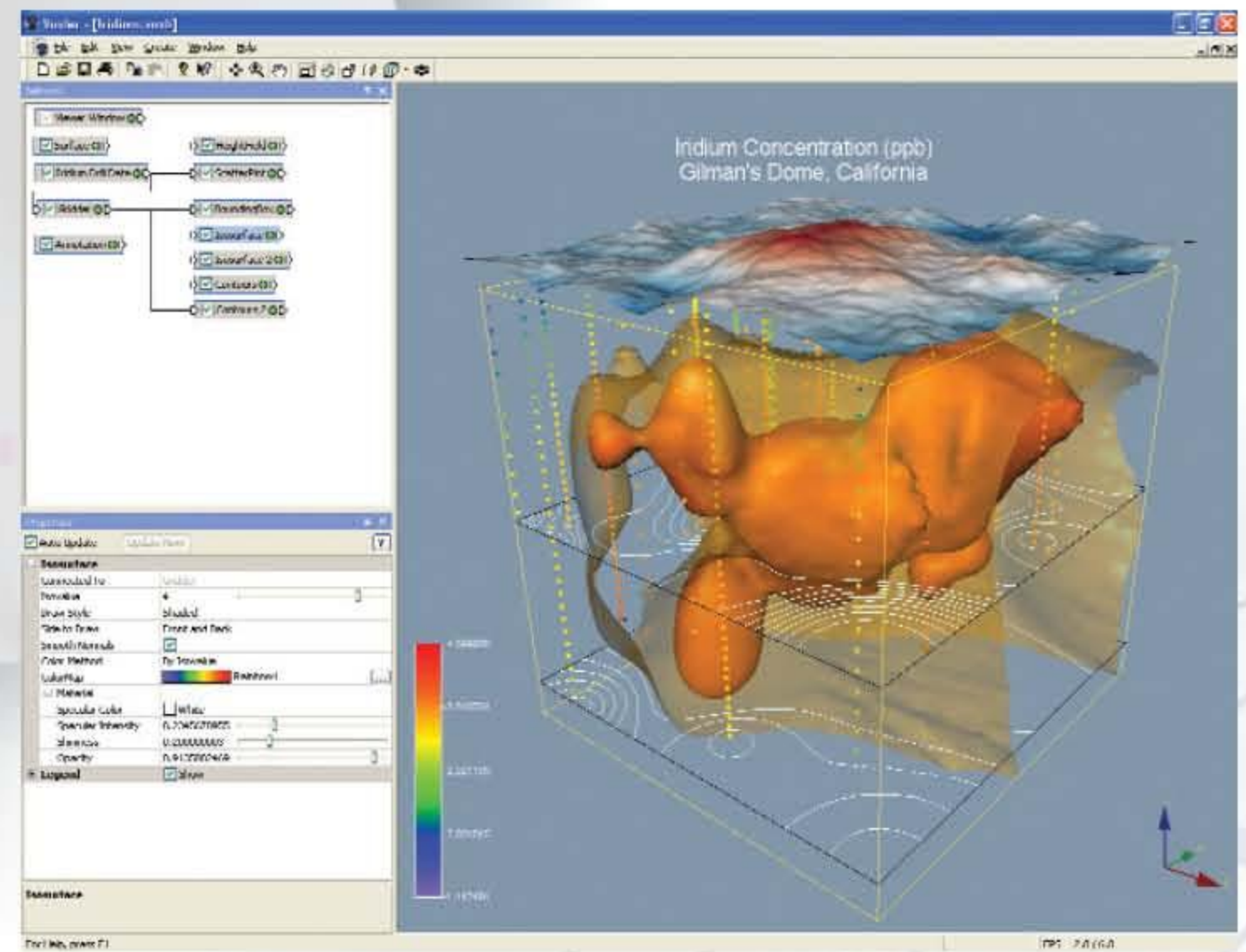
Superimpose two views of an MRI of a child's toy including a surface of constant value with a rendered volume of MRI intensities.



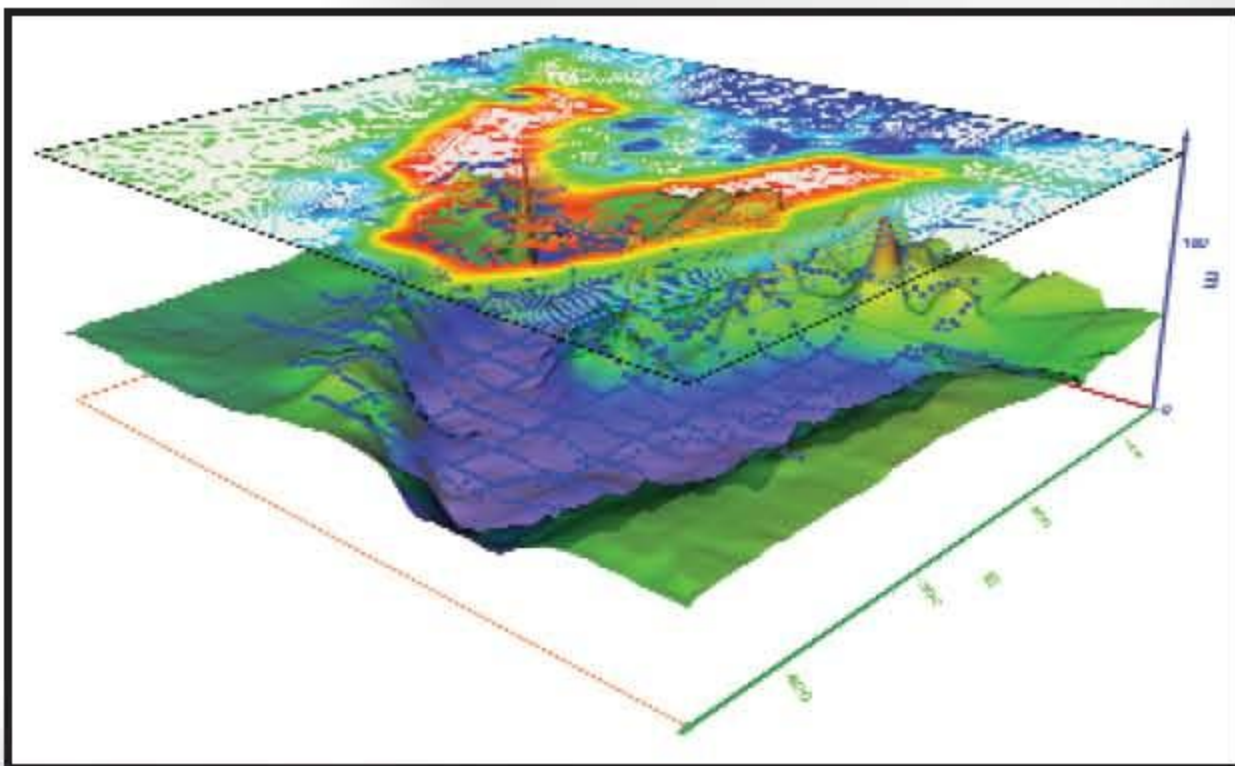
Color coded lines indicate the path of particles released in a velocity field. Vectors show magnitude and direction of the field.

## Who should Use Voxler?

- **Geoscientists** with 3D data from drill holes, petrography, seismic studies, and remote sensing surveys.
- **Environmental Professionals** with 3D data from groundwater and soil contaminant studies.
- **Meteorologists** with 3D data from atmospheric studies.
- **Oceanologists** with 3D data from ocean surveys of water temperature, salinity, and contaminants.
- **Biologists** with 3D data from organism sampling.
- **Bio-Technicians** visualizing confocal microscopy data.
- **Medical Professionals** with 3D data from MRI, CT, and ultrasound scans.
- **Engineers** with 3D data showing parameters distributed throughout the volume of an object.
- **Engineers** dealing with the visualization of computational fluid dynamics.
- **Research and Development Groups** performing numerical simulations.
- **Geo-Statisticians** needing to illustrate reservoir characterizations.
- **Seismologists** requiring velocity modeling.
- **Anyone** who wishes to see the distribution of 3D data.



Combine images showing the ground surface, boreholes, and iridium concentration values for a dazzling presentation.



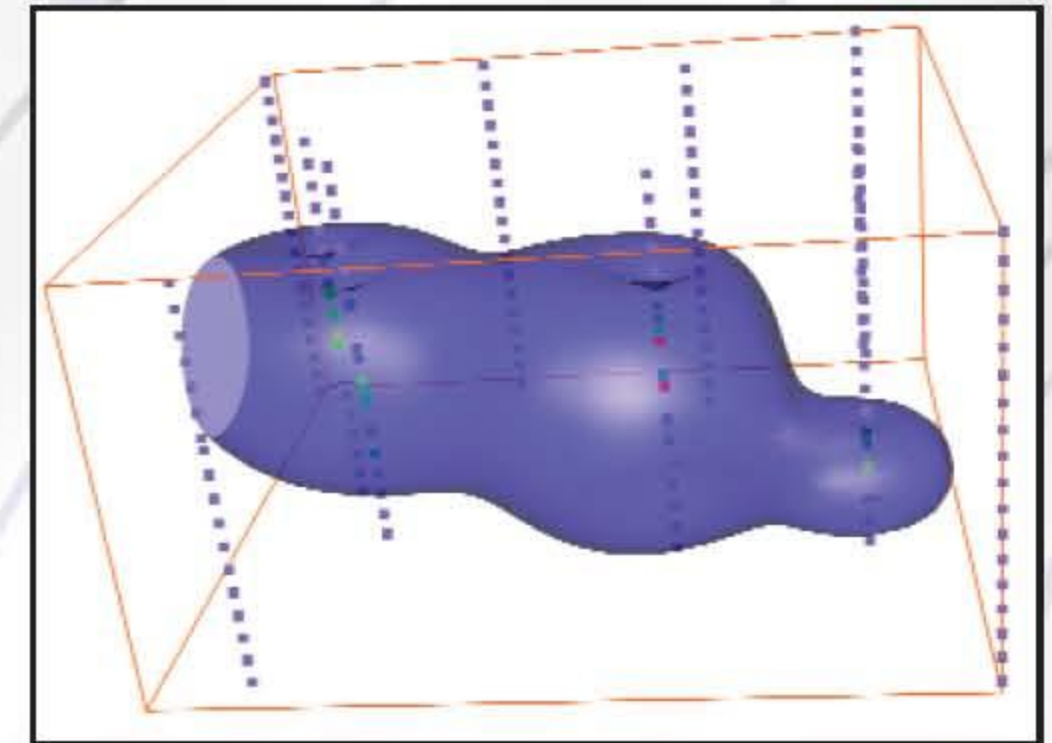
Create a colorful contour map of resistivity values! Combine it with a 3D surface map showing the elevations throughout the study area.

*"Overall, a great piece of software...The abilities to rotate displays and adjust transparency are awesome."*

Gary Rice  
President, GeoFrontiers

*"I was very impressed by the real-time dynamic cutting contour plane - awesome! You can be very proud of this software."*

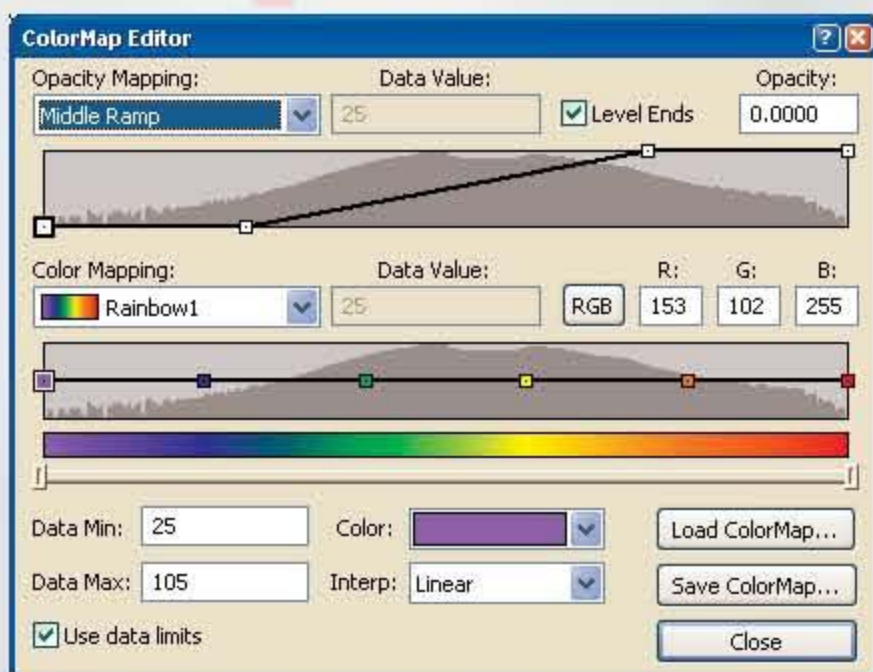
Dave Eisler  
Head Developer, Pixelmetrics



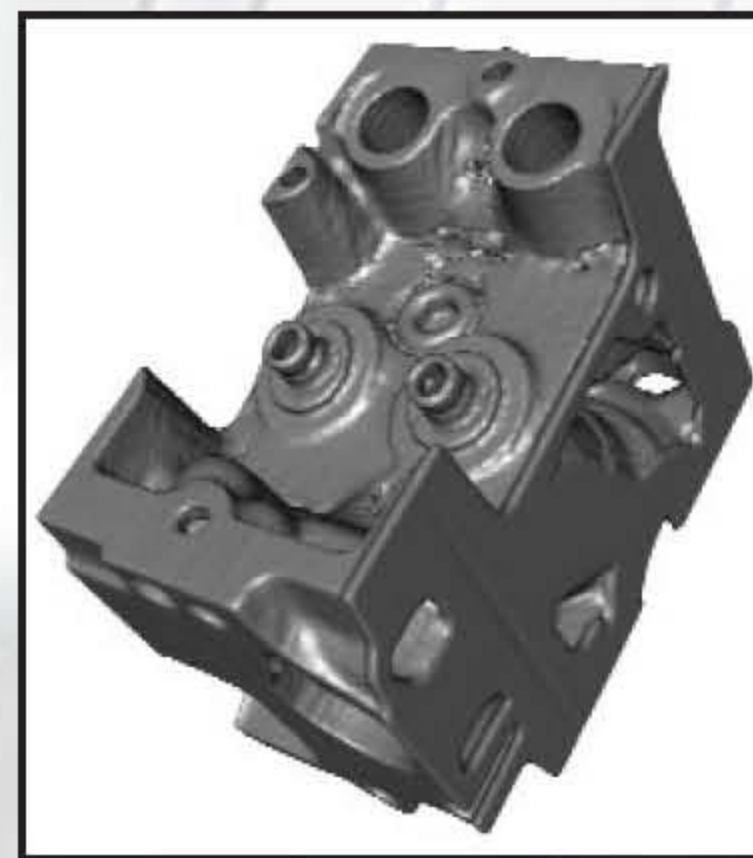
Display boreholes with equal value surfaces to delineate the cutoff value for economic grade of gold concentration.

## Free Technical Support!

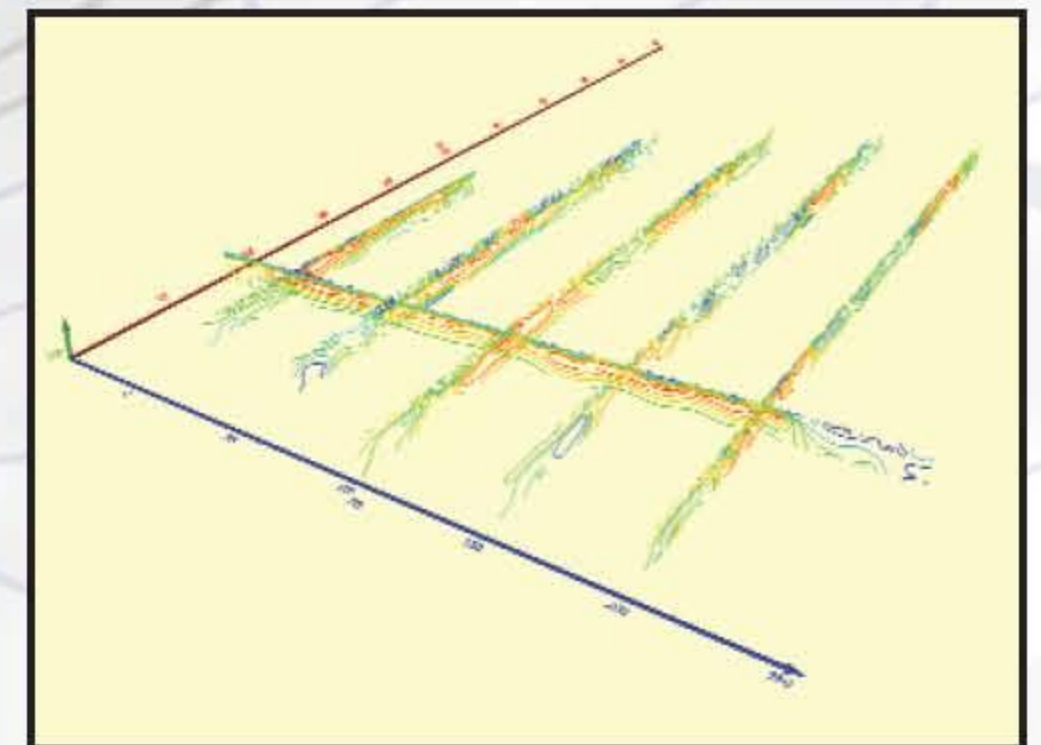
What do you do when you have a question? Take your pick! Consult the easy-to-read Getting Started Guide, check the dynamic online help, browse the **Voxler** Support Forum or **Voxler** FAQs on the Golden Software website, or simply give us a call! Our knowledgeable and friendly Technical Support staff is available Monday through Friday, 8am - 5pm Mountain Standard Time, to answer your questions. Technical Support is also available by fax or email and is free to all users.



Customize your color choices and combine with transparency/opacity!



Display a solid rendered module of virtually anything, and change the lighting direction, angle, and intensity.



Display cross sectional contour slices showing resistivity values from Dipole Electromagnetic Profiling through a landfill.

# Discover why you need **Voxler!**

- ✓ **Superior Visual Output!** Voxler provides the only integrated software for assimilating, controlling, and clearly visualizing your data and images. Interactively manage, investigate, visualize, analyze, compare, and present your data.
- ✓ **Unleash the Full Potential of Your 3D Data!** Create stunning colorful graphical output for your 3D models. You have more choices than ever to yield meaningful and informative visualizations utilizing superior image quality.
- ✓ **Extrapolate 3D Grids from Randomly Spaced XYZC Data Files!** Golden Software leads the industry in gridding quality and performance, providing precise images from your random point data. Voxler will increase your understanding of complex data sets.
- ✓ **Use Data Grids of Many Dimensions!** Easily display 1D, 2D, and 3D data grids with Voxler. Voxler can handle the type of data you have!
- ✓ **Use Data Grids with Many Values!** Display scalar 3D data grids with one value at each XYZ node, and vector 3D data grids with multiple values at each XYZ node.
- ✓ **Display Uniform, Rectilinear and Curvilinear 3D Data Grids!** Don't settle for one type of data source for your 3D models. Take advantage of Voxler's multiple data format import for plotting and modifying your images
- ✓ **Voxler in Medical Research!** Explore 3D medical imagery obtained from CT, MRI, and ultrasound scanning. Voxler's architecture is flexible, dynamic, and powerful. Easily map colors to dynamic variables.
- ✓ **Apply Standard and Custom Colorization to Data!** Your images will look their best! Use the smart default colors for graphic output, select new colors from the extensive palette of preset colors, or define and save your own palettes. You have complete control over the legend for publication quality print and imaging.
- ✓ **Look Inside Your Model!** Slice away parts of your data to uncover hidden regions. Internal trends or bodies of interest become crystal clear! Have complete control of opacity so you will see the core of your data.
- ✓ **Render 3D Volumes!** Impressive, skillfully colored volumes are a snap even for extremely large data sets. Voxler's advanced, knowledge based settings provide the highest level of image understanding.
- ✓ **Calculate and Display Isosurfaces!** Just as contour lines delineate lines of equal value in two dimensions, expand the concept to the isosurface to define a surface of equal value in three dimensions.
- ✓ **Filter Out Duplicate Points!** Quickly apply a duplicate filter to your data set to eliminate unnecessary points and clusters.
- ✓ **Display Streamlines!** See trends in your data by tracing the paths of objects in a gradient field!
- ✓ **Add Axes to Show X, Y, and Z Values!** Display the numerical values for the X, Y, and Z coordinates as color-coded axes to clarify the relationships.
- ✓ **Put On a Show with Vector Plots!** Voxler makes it easy to find your way in complex multi-dimensional data. Apply a vector plot using three-dimensional color vectors to clearly see trends and movement.
- ✓ **Update Graphics on the Fly!** Update a graphic with a changed data file or substitute a new data file, and watch the output graphics update in real time. Interactively see changes in computation and menu options.
- ✓ **Superior User Interface!** Have you ever returned to an old image to wonder how you created it? With the powerful Network window, the source files, transformations, and calculations are visually connected to record your settings for the current data, or for use with a new data set.
- ✓ **Display Scatter Plots of Data Points in 3D!** Know your data! Connect a scatter plot to the raw data set to immediately recognize data values and trends. Add different colors to the points based on data values. The dynamic color map editor is ever-present and powerful.
- ✓ **Display Colorful Contour Maps!** Cut through confusing data sets and display a data slice at any angle as a contour map.
- ✓ **Add a Bounding Box to Show the Limits of the Data!** Know your limits! Display boundary lines around your data to help keep you oriented and show where your data stops.
- ✓ **Display Surfer® Grid and DEM Files!** Bring your Surfer GRD and topographic DEM files into a 3D environment in Voxler.
- ✓ **Define Custom Exclusion Filters to Remove Unwanted Data!** Don't get stuck wading through unimportant data to find hidden data trends. Easily and efficiently exclude unwanted data from the model.
- ✓ **Easy Animation!** Gain a more complete understanding of your model by spinning your image in any direction. It only takes a quick movement of the mouse to set your graphic in motion!
- ✓ **Unmatched Input and Output!** Voxler is compatible with many import and export formats, software systems, and printers. Voxler produces extremely high resolution smoothed images for exporting and printing. When printing, large images can be tiled across multiple pages to be sure you have all the information you need!
- ✓ **Big Value, Low Cost!** Get all the functionality of a high-end 3D visualization package at a fraction of the cost. Voxler is a fully integrated, complete feature package packed full of value!
- ✓ **All This and Much More For A Special Introductory Price of Only \$359!**